



Product Lifecycle Management System



India Softima
Services Pvt. Ltd

Plan ahead

Communicate

and Succeed



Better way of managing a product

What is PLM?

Product Lifecycle Management is a powerful tool that helps you to plan, schedule and communicate very effectively throughout the product lifecycle.



Business Features

- Executive Dashboard with real-time statistics.
- Customizable Workflows.
- Scheduling and Priority based resource leveling.
- Well defined hierarchical Work Breakdown Structure.
- Planning with Gantt/PERT Charts.
- Edit Task Level (Actions the user can perform on assigned tasks within the project).
- Time sheet entries, Approval & Tracking
- Project statistics reports.
- Daily delivery, User workload report.
- Security & Access Rights.
- Alert notifications, e-mail notifications & file attachments.
- Project planning, scheduling and resource planning.

Why PLM?

To reach the success path for various industries, it is beneficial to identify an easy-to-understand product.

- PLM is an integrated, information driven approach to all aspects of a product's lifecycle from its design to its final disposal.
- Monitoring the progress of a product at any stage in its lifecycle — for example, tracking actual time of product development and comparing these to schedules.
- PLM technology provides an effective way to manage this data and improve processes.
- PLM provides a rich set of features that helps the project/product to manage very effectively.

Technical Features

- Intranet/Internet based solution
- Highly scalable – limited only by your hardware capabilities.
- Framework based solution – can be enhanced easily to meet your changing business requirements.
- Highly secured.
- Ability to manage multiple projects, multiple activities/tasks.
- Project level access and communications.
- Easily extended to and integrated with other systems (including email, Excel, PDF, XML and source control).
- Customized reports with filters.
- Gantt charts with zoom in on selected portion of projects.
- Reports in drill-down and tree-view structures.

Technology

PLM is developed using latest web-based technologies involving MVC Paradigm with Object Oriented.

Web - Based Technology

- PLM can be implemented in very short time without any additional installations on user's machine.
- As it is web-based, it offers excellent scalability, reliability, portability and security.

Scalability

Scalability in terms of number of users and transactions per second are limited only by hardware's ability to handle volumes.

Security

We recognize the security is a major concern for any organization dealing with classified information.

SSL – Encryption:

128-bit encryption provides industrial security.

Second layer security:

PLM can be hosted using restricted access to host server such as Windows level Security to act as a second layer security.

Password Security:

Each user is assigned password that is stored in database with non-decryptable encryption methodology.

Firewall security:

PLM can be hosted behind firewall in DeMilitarized Zone (DMZ) even for internal users.

User Security:

- **Role based security** : User security is based on the roles defined for the users. The access is restricted as per the role of the user. All menus will be automatically adjusted to the role in which the user logs-in.
- **IP Restriction** : Users can be allowed to log-in to the system only from specific systems by restricting to the IP number assigned to that user and system.
- **Activating/Deactivating Users**: Users can be activated or deactivated for specific periods of time.
- **Object Based Security – Menu Security**: Role based security can be enhanced even to restrict access to certain portions of the reports/screens.

Maintenance, support and upgrades

- 1-year warranty and 3 months onsite maintenance support.
- On call support during warranty period.
- Free upgrade releases during the warranty period.

Pricing

Highly competitive in Pricing and Softima will provide continuous support for a period of one year at highly reduced costs, if additional customization is required.

Ease of modification/enhancements

Some times it is very essential to customize the product with additional features. In this view PLM makes very easy to the user to maintain and enhancement with additional features.

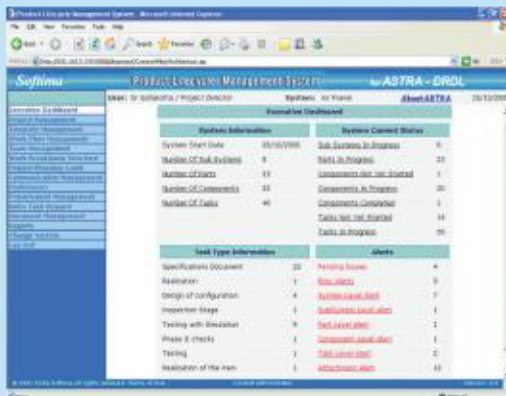
Executive Dashboard

An interface that organizes, presents information in a format that is easy to read and interpret.

Executive Dashboard

Provides a glimpse of project with real-time project status to the executive management.

- Information from multiple projects and resources can be viewed simultaneously.
- Real time project statistics.
- Task deliveries.
- Unread alerts with pop-up message.
- Pending issues.
- Drill-down to detail level.



System Information				System Current Status	
System Start Date	05/01/2008	Sub-Systems In Progress	6		
Number Of Task Delivered	9	Tasks In Progress	23		
Number Of Issues	11	Connections Not Yet Started	1		
Number Of Comments	22	Connections In Progress	20		
Number Of Tasks	40	Connections Completed	1		
		Tasks Not Yet Started	16		
		Tasks In Progress	99		

Task Type Information		Alerts	
Specifications Document	23	Pending Issues	4
Requirements	1	Task Alerts	9
Design of Configuration	4	System Alerts	1
Inspector Sheet	1	Subsystems Localization	1
Testing with Simulation	9	Task Alerts	2
Phase B Checks	1	Connections Alerts	1
Testing	1	Task Alerts	2
Installation of the man	1	Attachments Alerts	11

Project team Communication

Communication within the team is maintained by solutions for raised issues, alert messages between the team members and raise task requests to other members etc.

Alerts:

A message sent to selected team members attachments along with effectively replacing unsecured e-mails that can raise security concerns.

- Reply, acknowledgement, forward.
- Offline unread alerts notification.
- File attachments along with alert notifications.

E-mail Notifications:

E-mails can be sent to team members with the registered e-mail ids effectively blocking emails to be sent outside the organizations.

In fact, an alert can bring immediate attention and notifications to the receiver, while managing the entire track of communication within PLM.

Issues & Solutions:

Issues & solutions allow users to document, discuss technical and functional doubts between two team members. If the solutions are not found then the issue can be forwarded to other team members.

Raise Task Request:

User can request task requests to other team member for the tasks that required to be done by the team members. Generally, this facility used by supervisor to allocate tasks, but it also allows any member to raise task to other members.

Document Management

In order to complete project there must be several documents to be maintained. These documents categorized and stored at the hierarchy levels of WBS.

- File with any extension up to 1 GB.
- Alert notifications while attaching files.



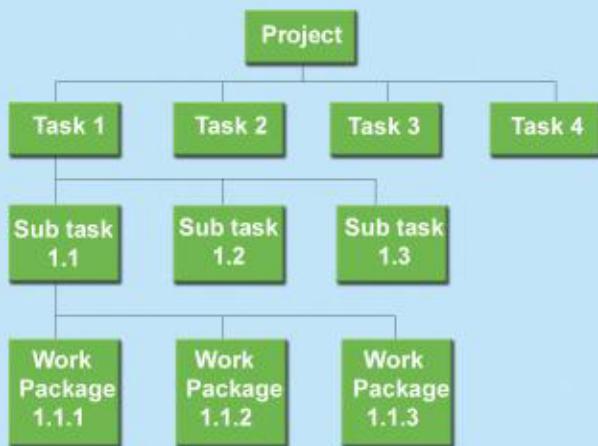
Work Breakdown Structure (WBS)

WBS is the foundation of project planning. WBS is developed before dependencies are identified and activity durations are estimated.

Work Breakdown Structure (WBS)

PLM provides four levels of hierarchy order for Work Breakdown into manageable components.

- WBS, to identify the tasks in CPM and PERT project planning techniques.
- Tree view and drill-down reports on WBS with export facility into MS Word, Excel, PDF etc.



Team Management

A single employee can be assigned to multiple projects irrespective of durations.

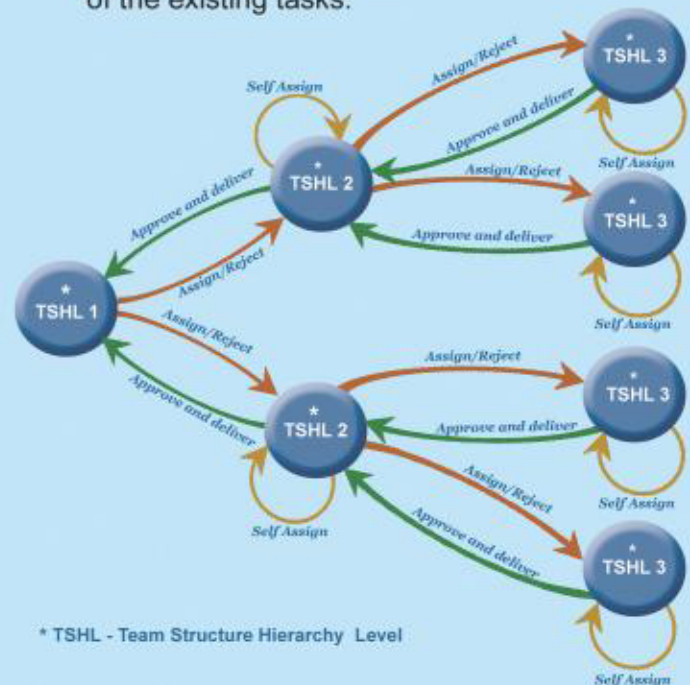
- Easy tracking of employee performance.
- A team can simultaneously work on multiple tasks of multiple projects.
- Roles and responsibilities can be varied project to project



Customized Workflow

Workflow Management is a system of overseeing the process of passing information, documents, and tasks from one employee to another within team.

- The work can flow both forward and backward directions with unlimited number steps for approval, providing ability to accept, reject and assign with the flow defined.
- Workflow is managed by means of well-defined team structure templates.
- User defined team structures can effectively be added, modified accordingly workflow can be changed.
- Workflow can be customized and modified as per business requirements and departmental employee restructuring, without affecting any of the existing tasks.



* TSHL - Team Structure Hierarchy Level

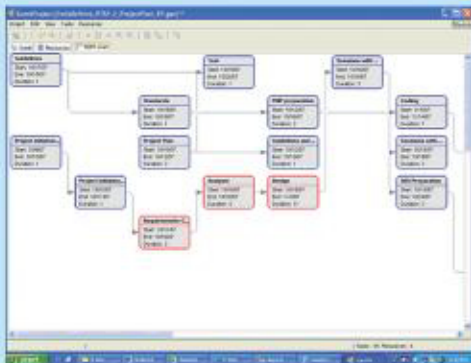
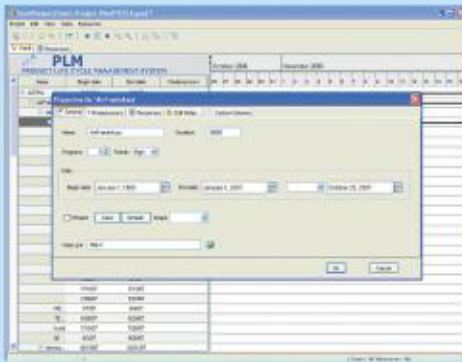
Planning and Scheduling

To balance the triple constraints of time, cost and scope/quality that are present in all projects planning and scheduling is essential.

Project Planning & Scheduling

As projects become larger, however, a pragmatic general management approach can often be overwhelmed by the sheer complexity of the projects being run. Larger projects benefit from formal planning and scheduling.

- Planning and scheduling with Gantt/PERT charts.
- Planning with the well-structured WBS at all hierarchy levels.
- Customizable task properties like duration, predecessors etc.
- Task duration in working days.
- Easy and effective task scheduling.
- Easy to change schedules.
- Finish-to-start, start-to-start, finish-to-finish and start-to-finish relationships.



Task Assignments

A Task represents an assignable work unit that can be created at lower level of WBS.

- This allows the work to be tracked at task level assigned to various resources.
- Tasks can be created, assigned as per the team structure.
- Tasks follow the flow defined in workflow.
- Easy monitoring with estimated as well as actual start dates and end dates.
- Tasks with priorities and priority orders.



Timesheet Entries

Timesheet management can be used for internal resources and external vendors to track their time.

- The timesheet approval mechanism can be effectively used to control costs and verify the progress of the project.
- Time tracking for vendors in billable and non - billable hours.

Procurement

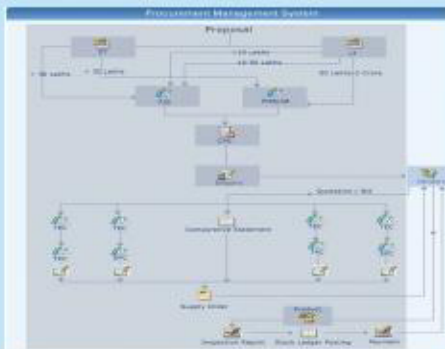
PLM introduced an innovative method of procurement. PLM helps to pursue any of the transactions that ultimately lead to a purchase of goods/items within the organization.

Simplified e-Procurement

Procurement Management automates procurement process from the material request to release of supply order.

Procurement Lifecycle:

- **Step1:** Online material request by indenter
- **Step2:** Scrutiny by finance/ stores departments and then sanctions by approval authorities.
- **Step3:** Stores department requests RFQ (Request For Quotation) from suppliers/vendors.
- **Step4:** Technical evaluations and Price negotiations by the authorized committees.
- **Step5:** Releasing supply order to the short-listed vendor/supplier.



RFQ Categories:

- S.T: Single Tender
- L.T: Limited Tender
- P.T: Proprietary Tender
- O.T: Open/Global Tender

Material Request Approval:

PLM automates the material request approvals by approval authorities at various stages like finance department etc.

RFQ Request:

PLM facilitates the RFQ to auto-generate in a format that can be distributed selected vendors/suppliers.

Approval Authorities:

Approval authorities can see a list of material requests to approve the material requests that are to be approve the selected requests.

Cancellation/Amendments:

Approved material requests may later be amended/ cancelled based on the indenter requirement situation

Supply Order:

In system, Supply order can be generated automatically which is to be placed on the vendor against the supply of material after evaluation by all the committees

OUR VALUED CUSTOMERS:

DRDL

RCI

*Making your success
is
Our passion*

India Softima Services Pvt Ltd

USA

Softima, Inc.
12200 Ford Rd, Suite 355. Dallas, TX 75234
Tel: (972) 484-4574 x 101,
Fax: (972) 692-8057
Direct: (241) 347 - 4291,
<http://www.softima.com>



India

India Softima Services Pvt. Ltd
Plot No: 1355/G1/B, Road No: 45,
Jubilee Hills, Hyderabad - 500033.
Tel : +91-40-2355 7795/97
Fax : +91-40-2355 7796
<http://www.indiasoftima.com>

